

# PetroOrg<sup>®</sup> Software

A chemically intelligent, state of the art software developed specifically for petroleum data analysis acquired by mass spectrometry.

**PetroOrg** provides a platform for automated, unequivocal elemental composition assignment, automated generation of classic Petroleomic diagrams, automated report construction, and much more.



<http://www.petroorg.com>

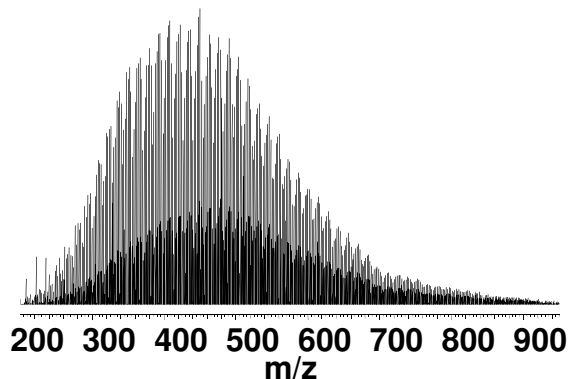
Corilo, Y. E. PetroOrg Software; Omics LLC; All rights reserved.

# The PetroOrg Petroleomic Workflow

## FT-ICR MS

~8000 peaks > 6σ

$m/\Delta m_{50\%} = 600,000$  at  $m/z$  500



1. Recalibration
2. Elemental Composition Assignment



Elemental Composition	Measured Mass	Calculated Mass	ppm error
$C_{29}H_{42}N_1$	404.3323	404.33227	0.16
$C_{30}H_{44}N_1$	418.348	418.34792	0.18
$C_{31}H_{46}N_1$	432.3638	432.36357	0.48
$C_{32}H_{50}N_1$	446.3793	446.37922	0.15
$C_{27}H_{47}O_2$	403.3582	403.35815	0.09
$C_{28}H_{49}O_2$	417.3738	417.37380	-0.13
$C_{29}H_{51}O_2$	431.3895	431.38945	0.18
$C_{30}H_{53}O_2$	445.4052	445.40510	0.12
$C_{31}H_{55}O_2$	459.421	459.42075	0.49
$C_{32}H_{57}O_2$	473.4364	473.43640	-0.07

3. Classification

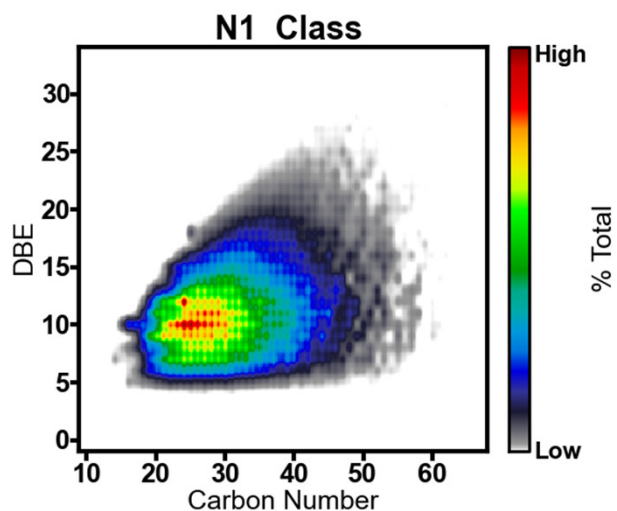


**Carbon Number**

**Heteroatom Composition**

**Double Bond Equivalent (DBE)**

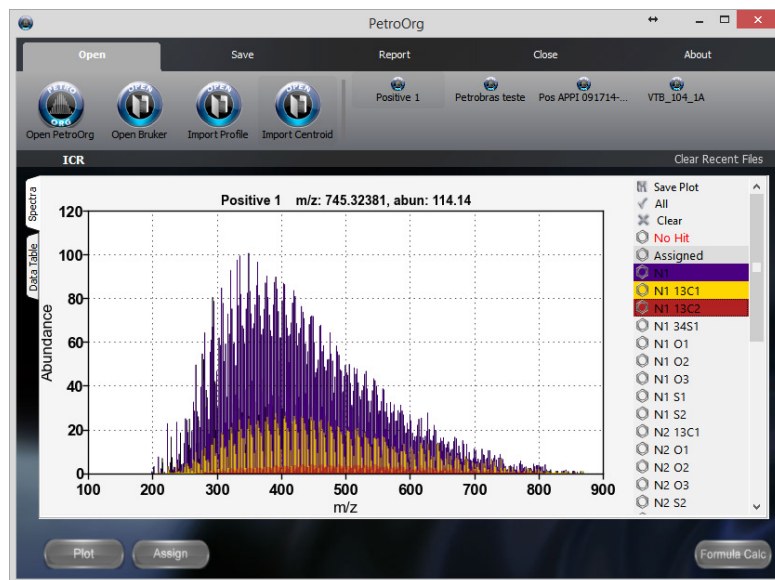
$$DBE = C - \frac{H}{2} + \frac{N}{2} + 1$$



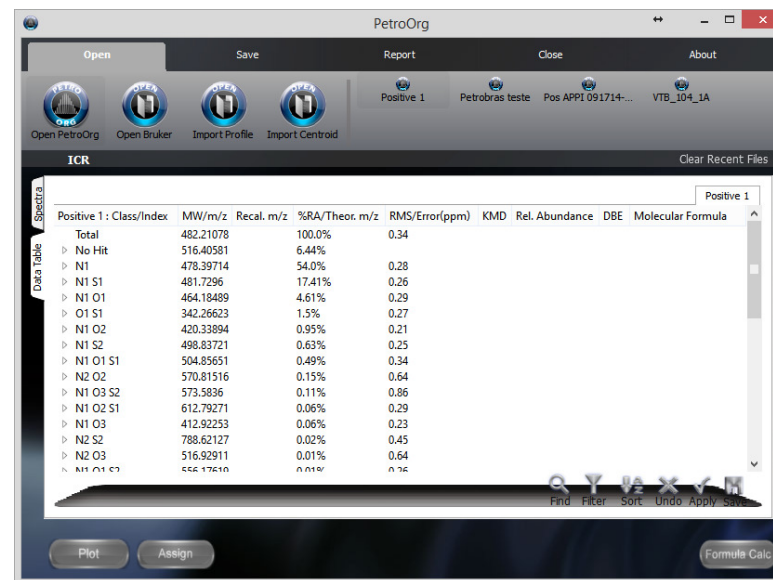
4. Data Visualization



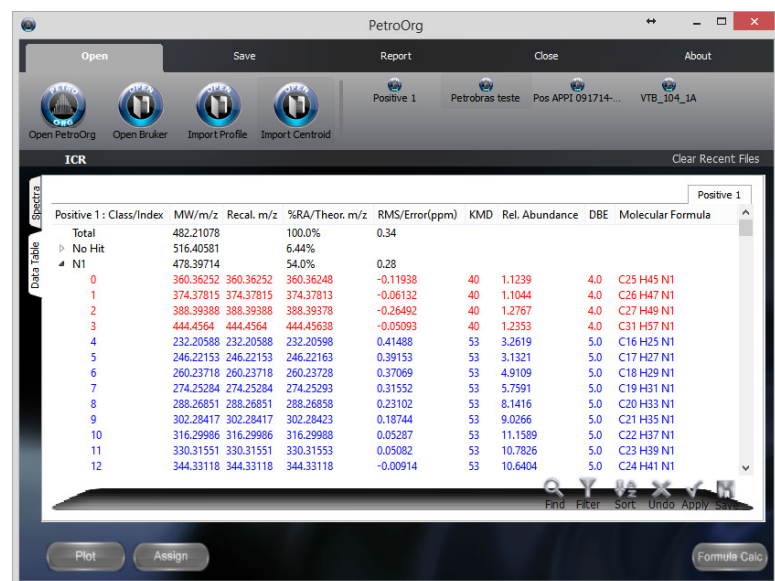
## Dynamic and Flexible Class Visualization



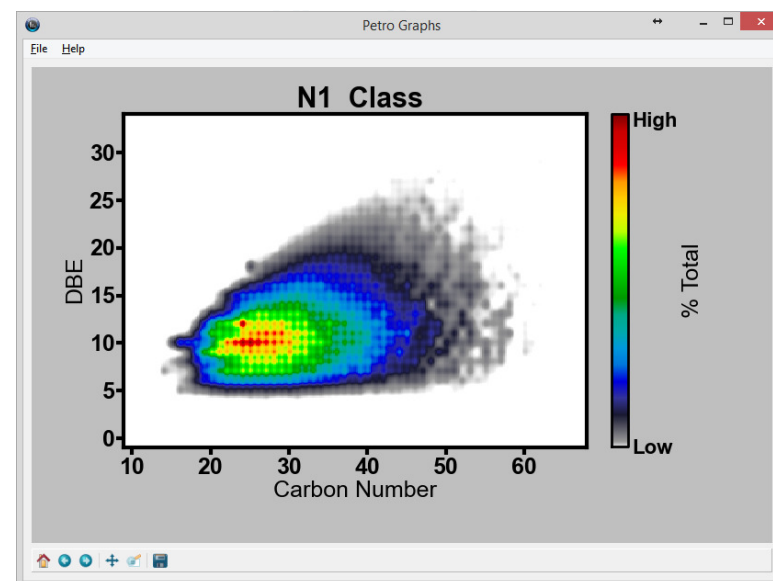
## Data Organization by Heteroatomic Class



## Complete Molecular Characterization and Detail for Each Class



## Comprehensive, Customizable, and Batch Data Visualization



# Integration with the Bruker solarix



**solarix<sup>®</sup> XR data**

*m/z*



*m/z*

**Carbon Number  
Heteroatom Class  
DBE**

- 1. Recalibration**
- 2. Elemental Composition Assignments**
- 3. Classification**



- 4. DATA VISUALIZATION**
- 5. REPORT GENERATION**

# BATCH PROCESSING & DATA VISUALIZATION

